



The Queen's Tribune

Volume 5, Issue 2 • March 2008

Principal's Message

By Kevin Yuen

Aloha,

Good News! Our revised Spring 2007 Hawaii State Assessment (HSA) proficiency scores are 59% for reading (original: 58%) and 52% for math (original: 46%). You may have heard in the news several months ago that there were some scanning errors when scoring the testing documents. This resulted in the rescoring of the tests and the adjusted scores. Congratulations to all - especially to our hard working students and faculty. I am so proud of all of you!

QLS test administrators (teachers/admin.) will be trained on Wednesday March 5, 2008 by Ms. Carolyn Ohara, Counselor. Ms. Ohara and PCNC Lori Yamada will be sending home test preparation strategies. It would be very beneficial to your child if you work with him/her during the Spring Break, since we will begin testing the week the students return. Our regular testing period will be from Tuesday, April 1 until Thursday, April 10, with all make-up testing to be completed by Friday, April 18. Your involvement and attention to critical test taking skills and making sure your child returns rested and rejuvenated will make an impact on his/her success.

Short Note: Believe it or not, the end of the 3rd Quarter is on Friday March 14, 2008.

Principal's "Wish List"

At this time I would like to introduce a new feature of my Principal's Message. Parents and friends of QLS often express that they would like to help in any way but do not know how to get involved. I thought that a new "wish list" section would be a great way to share this information.

First of all, I would like to thank a few friends of QLS that are already involved; **Pastor Ron Arnold** who has been so supportive with our Common Grace partnership and a donation of funds to purchase a new ice machine for QLS. Mahalo to **Mr. Larry Kau** (parent of Ethan, Gr. K) for agreeing to help install our new ice machine. Arigato to **Mr. and Mrs. Shawn Matsumoto** (Kumon) for the donation of student desks and chairs. Muchas Gracias to **Mr. Masa Miyashiro** who is beautifying our school grounds on the weekends.

"Wish List". Here are a few areas of need and new projects that are in the planning stages that you may want to consider:

1. Need volunteer help in the main office with basic clerical work/phones.
We will be starting the new "Meal Tracker" lunch payment system in April.
2. Eagle Scout Project. Outdoor classroom/stage. Alan Lee, Grade 11 Kalani HS.
3. Moving of furniture and equipment. New PCNC station. New DATA Room.
New Title I "Na Hoku Ala" and Title III (ESL) programs.
4. Painting of our basketball poles and goals.

If you would like to help with any of the mentioned areas, please call Kevin Yuen, Principal @ 733-4680. Please leave a message.

REMINDER: Spring Testing

By Carolyn Ohara, Counselor

The Hawaii State Assessment for Reading and Math is just around the corner. Since 1999, the Hawaii State Department of Education has maintained learning expectations, known as the Hawaii Content and Performance Standards (HCPS), for Hawaii's students. The Hawaii Content and Performance Standards identify important ideas, concepts and skills that students must learn and they describe what students must do to show their mastery of the standards. The Spring Hawaii State Assessment for grades 3, 4, 5, 6, 7, 8, and 10 measures how well students are doing in Reading and Mathematics.

Testing at Queen Lili'uokalani will take place April 1 – April 11, 2008. Three subtests for reading and three subtests for math will be administered. It is important that students participate in all subtests in order to get valid proficiency level scores. We therefore request that parents do not schedule appointments for their child(ren) during school hours on the days tests are administered.

Parent Information Booklets will be sent home with students in grades 3 – 6 prior to the test. If you have questions, please don't hesitate to call the school counselor, Mrs. Carolyn Ohara, at 733-4680.

GLO AWARDS

By Carolyn Ohara, Counselor

**GLO #1 was recognized in February – Self Directed Learner.
Congratulations to all who were recognized on Wednesday, February 27th!**



After School Enrichment Programs

By Lori Yamada, Director

The Second Session of our After School Enrichment Programs has started! Mahalo to our brave instructors who are teaching these classes: Japanese I – Lori Seki, Creative Movement – Deanna Luster, Art – Lori Yamada, Kids' Cooking – Michelle Nakaya, and Keiki Komputer Keyboarding – Tavis Kagawa. Please mark your calendars for the Talent Extravaganza on May 22 where our students will be showcasing what they have learned in these programs.

Queen Lydia Lili'uokalani School • 3633 Waialae Avenue, Honolulu, HI 96816 • ph: 733-4680 • fax: 733-4685

© Kevin Yuen, Principal ☺ Lori K. Yamada, Editor & PCNC ☺

PTSA (Parent Teacher Student Association)

Mrs. Michelle Nakaya, President

Next PTSA Meeting is on Monday, March 10th at 4:30 p.m. in the QLS library. Discussion will be further planning of the Ala Moana Barnes & Nobles Book Fair during the Spring Break – March 21-23. A percentage of sales during this period will be donated to our school and INCLUDES items from their snack bar! Teachers have submitted their wish lists for books they need for their classrooms and our students will have artwork displayed at the store. Let your friends and family know about this “fun”draiser and save your book and gift purchases until then. Included in this newsletter is a flyer and vouchers to pass out that gives us the sales credit. Additional vouchers will be available in the office.

SCC (School Community Council)

Mrs. Lori Toyama, SCC Chair

Next SCC Meeting is Tuesday, March 11th at 4:00- 5:30 p.m. QLS library. We will be discussing new and exciting plans for the upcoming school year. SCC elections are coming up. Interested parties should contact Mrs. Toyama for an application. We will also be establishing the concept of having a rotation of classified and certificated members serving for future terms.

SPRING BREAK CHILDCARE

MARCH 17 - MARCH 28, 2008

YMCA

When school's out, the YMCA is in! Full day programs are offered during the weeks that school is not in session. All day child care by the week, during the fall, winter, and spring recess/intersession. All year round for Multi-Track Schools. Grades (K-6). The Intersession program provides high quality child care. Activities include recreational swim, sports and games, arts and crafts, music and dance, stories and drama, and weekly excursions. www.ymcahonolulu.org. Kaimuki-Waialae YMCA, 4835 Kilauea Avenue, Honolulu, HI 96816, Tel. (808) 737-5544, Fax (808) 735-984.

Moiliili Community Center

Call for availability and information. Moiliili Community Center's office at 955-1555 or email moiliilicc@hawaii.rr.com.

Wesley United Methodist Church – Billy Henson, Director

Offers a Full Day program for children age 5-12, licensed by the State of Hawaii. The program will start on Monday, March 17th and end on Friday, March 28th. Hours are 7:00 a.m. – 5:30 p.m. Daily and weekly rates are available. Please call 732-3273 to register or for more information.

Kamaaina Kids' Spring Day Camps

Locations all over Oahu. Call 262-4538 for more information and choice of locations. www.kamaainakids.com

THE FAMILY RESOURCE NETWORK CENTER

Free publications are available at our Family Resource Network Center (FRNC) located in the Admin Office! This is a community resource open to the public. We hope you will find our FRNC to be an easily accessible place where you can find information and resources on children and family-related issues and concerns. This resource was developed with support from the University of Hawaii Center on the Family and the Department of Human Services. *Highlights for this month are: Young Children Issues – Child Care and Nutrition.*



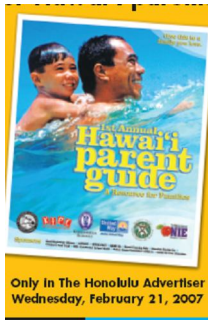
Queen Lydia Lili'uokalani School • 3633 Waialae Avenue, Honolulu, HI 96816 • ph: 733-4680 • fax: 733-4685

© Kevin Yuen, Principal ☺ Lori K. Yamada, Editor & PCNC ☺

COOL WEBSITES TO VISIT

www.loc.gov

Readable copies of rare children books and fun things to do online!



The Hawaii Parent Guide published by the Honolulu Advertiser is now ONLINE. You can download a copy on the Family Support website at: <http://familysupport.k12.hi.us/> This informative guide has everything you wanted to know about resources available in Hawaii for your keiki.

<http://familysupport.k12.hi.us>

Family Support Website



www.KaimukiHawaii.com

The latest happenings around town and our community.



MARK YOUR CALENDARS!

(Events, dates and times are subject to change – details to be announced)

March

10 - PTSA Mtg. 4:30 p.m. Library

11 - SCC Mtg. 4:00 Library

14 – End of 3rd Quarter

17 – 28 – SPRING BREAK

21 – 23 - *Barnes & Noble Book Fair* Kahala Mall.

Special Events on March 22, 11:00 am-1:00 pm

April

7 - 11 – Hawaii State Assessment Testing

15 - SCC Mtg. 4:00 Library

PTSA Mtg. TBA

May

2 – P/C Day – **No School**

PTSA Mtg. TBA

16 – Field Day (details to be announced)

20 - SCC Mtg. 4:00 Library

22 – Talent Extravaganza 4-5:30 pm, Cafeteria

26 – Memorial Day – **No School**

June

3 – Awards Assembly

4 – 6th Grade Graduation

5 – **Last Day of School**

FUN FREE THINGS TO DO WITH YOUR KEIKI

Easter Egg Hunt at Kaimuki Community Park

Saturday, March 15, 2008, 9:30 am registration at Kaimuki Park.

Academy of Arts Bank of Hawaii Free Sunday

The third Sunday of every month is Bank of Hawaii Sunday with free admission for all. Enjoy live music and dance performances, videos, storytelling and other family friendly entertainment. Take a self directed gallery hunt. Activities include make and take art objects for keiki and adults. Phone: 532-8700.

Kama'aina Sundays at 'Iolani Palace

Both the Palace Galleries and docent-guided tours of the first and second floors are free of charge of Hawai'i residents (bring your state ID or Hawai'i driver's license) on one Sunday (usually the first Sunday) of most months. Tickets will be distributed on a first come, first served basis. The first tour of the day starts at 9:00 a.m. and the last tour starts at 2:00 p.m. No reservations will be taken except for groups of 10 or more. Kama'aina Sundays are normally held on the first Sunday of the month, but check

ahead because it can be scheduled otherwise. Komo mai! Phone: 522-0822

First Friday Honolulu

Downtown-Chinatown Gallery Walk, 5-9 pm, every first Friday of the month. Downtown galleries and studios open their doors for an evening celebrating artists, art and art making of all kinds. Affordable parking rates are available in the Municipal Parking garages – Alii Place, Chinatown Gateway, Hale Pauahi, Harbor Court, Harbor Village, Kekaulike Courtyard, Kukui Plaza, Marin Tower and Smith-Beretania. Information: www.artsatmarks.com

Sunset on the Beach

Free movie, live entertainment and food booths on Waikiki Queen Surf Beach. Festivities start at 5 pm. Movie starts at 7:00 pm. Scheduled for the following weekend – March 15 & 16 – Movies to be determined at this printing. www.sunsetonthebeach.net

Kaimuki Public Library – NEW HOURS

1041 Koko Head Avenue

Honolulu, HI 96816 Phone 733-8422

Hours: Sun 10-5, Mon and Tues 10-8, Wed and Thur, 10-6, Fri Closed, Sat Closed. Borrow Books, videos & surf the web!

Queen Lydia Lili'uokalani School • 3633 Waialae Avenue, Honolulu, HI 96816 • ph: 733-4680 • fax: 733-4685

© Kevin Yuen, Principal ☺ Lori K. Yamada, Editor & PCNC ☺

MISCELLANEOUS

Hawaii Shotokan Karate

Beginner's Karate Classes at Lili'uokalani School Cafeteria. Mondays and Wednesdays at 5:30 p.m. Call 988-7128 for information and registration.

Email: hawaiishotokankarate@hotmail.com

Website: www.hawaiishotokankarate.com

Cornerstone Martial Arts

Teaching an eclectic system based on Jeet Kune Do, Shao Lin Kung Fu, and Chinese Kenpo with family values. Beginner's Classes at Lili'uokalani School Cafeteria. Tuesdays and Thursdays at 7:15 p.m. Pre-registration required by calling 735-3486. Website: HawaiiKungFu.com

Pump It Up! 561-1000

Inflatable Bouncers & Party Rentals. Owner is a QLS dad who donates his service to our school functions!

Email: jeffreyrenner@yahoo.com

Website: www.pumpitup.bizland.com

Common Grace by Pastor Ron Arnold

Common Grace links volunteers from a local church with kids in a public school. The motto of Common Grace is "Matching the kindness of a local church with the needs of a kid in the public school." The first "partnership" between a church and a school was in 2003; it was between Kaimuki Christian Church and Queen Lydia Lili'uokalani Elementary. Now there are 36 church/school partnerships! For the past 5 years, volunteers from Kaimuki Christian Church, known as "Aunties" & "Uncles" or simply as "Buddies", have been spending an hour a week with a child at Lili'uokalani. We rely on the teachers for selection of Common Grace Kids, who secure permission from parents/guardians, and then seek to support the family and the school by being a caring friend. If you would like more information about Common Grace, go to

www.commongrace.org or contact Dee Arnold at arnold.deanna@gmail.com or 779-5381.

TRASH INTO TREASURE

HI 5¢ Recycling

We are collecting HI-5¢ bottles and cans. Please bring your recyclables to school to be turned into cash for our various enrichment programs. The collection bins are near Room C-208. Tell your friends and family to save their recyclables to benefit our school

Tyson Foods Project A+

Look for these labels on your Tyson brand products. Each label is worth 24¢! In your grocer's freezer section, look for Tyson Products that display the Project A+ logo. The label you save is easily identified by looking for the simple 1, 2, 3 program steps.

Campbell's Brand Labels for Education

Save points from labels and lids from Campbell Brand products to earn merchandise for our school.

BoxTops For Education

Cut out and save these coupons on your favorite General Mills products. Ziploc Bags and Kleenex are some of the new items that you can find these coupons. They are worth 10 cents apiece! Have your family and friends collect them to send with your child to school.

Healthy Hawaii Schools

This program sponsored by Meadow Gold and Education Works gives credit for merchandise at the Education Works Store. Save the **UPC Codes** from the following Meadow Gold drinks - One gallon (worth 20¢) VIVA 2%, 1%, Fat Free milk and 1% Chocolate Milk. Half gallon (worth 10¢) Meadow Gold Skim, Egg Nog, VIVA Extra Calcium, 2%, 1% Acidophilus, Low Fat and Chocolate milk.

JOKES OF THE MONTH

What are prehistoric monsters called when they sleep? A dinosnore!

What is the fruitiest lesson? History, because it's full of dates!

Where does a general keep his armies? Up his sleeves!

If two's company and three a crowd, what are four and five? Nine!

What is heavier, a full moon or a half moon? The full moon because it's lighter!

What illness did everyone on the Enterprise catch? Chicken Spocks!

What is a myth? A female moth

QLS 'OHANA PHOTOS

Health & Safety Fair – February 25, 2008





**Barnes & Noble
Bookfair Voucher
Supporting**

**Queen Lili'uokalani
Elementary**

**March 21, 22 & 23, 2008
Barnes & Noble**

**Kahala Mall
4211 Waialae Avenue**

Please present this voucher
prior to making your
purchase. A percentage
of the net sale will be
donated to your school.*

BOOKFAIR ID #: #QLS

*THE PURCHASE OF GIFT CARDS AND MEMBERSHIP CARDS ARE
NOT INCLUDED IN BOOKFAIR TOTALS. OUR DISCOUNT PURCHASING
PROGRAM MAY NOT BE APPLIED TO BOOKFAIR PURCHASES.

March 2008

Sunday	Monday	Tuesday	Wednesday	Thursday	Friday	Saturday
	Barnes & Noble Book Fair Kahala Mall Store, March 21, 22 & 23, 2008 Percentage of Sales Benefit QLS!					1
2	3	4	5	6	7	8
9	10 PTSA Mtg. 4:30 pm Library	11 SCC Mtg. 4:00 pm Library	12	13	14 END OF 3 RD QUARTER	15
16 	17 SPRING BREAK St Patrick's Day 	18 SPRING BREAK	19 SPRING BREAK Kaimuki Neighborhood Board Mtg. 7 pm Cafeteria	20 SPRING BREAK	21 SPRING BREAK Good Friday	22 Barnes & Noble Book Fair Special Events Day 11:00-1:00
23 Easter 30	24 SPRING BREAK 31	25 SPRING BREAK	26 SPRING BREAK Kuhio Day	27 SPRING BREAK	28 SPRING BREAK ends	29

April 2008

Sunday	Monday	Tuesday	Wednesday	Thursday	Friday	Saturday
HSA TESTING		1 April Fool's Day 	2	3	4	5
6	7 HSA Testing starts this week	8	9	10	11	12
13	14 HSA Make Up	15 SCC Mtg. 4:00 pm Library	16 Kaimuki Neighborhood Board Mtg. 7 pm Cafeteria	17	18	19
20	21	22	23	24	25	26
27	28	29	30	Please do not schedule appointments during the testing period.		