



The Queen's Tribune

Volume 5, Issue 4 • May 2008

Principal's Message

By Kevin Yuen

On Saturday, April 26, 2008, eight of our bravest students participated in the 20th Annual Chevron Speech Festival. Rich Miano, the new Assistant Head Coach for the University of Hawaii Football team was the featured guest speaker. He shared that communication is very important in every aspect of life. He said that clear communication both on and off the “playing field” is very important to individuals and the team’s success. Students must learn that being able to speak clearly with confidence, being able to share ideas and information accurately, and to always be respectful and kind to everyone that you encounter is what we should all practice.

Our students proudly shared selected Poetry and Stories (Storytelling). Sheleg Dekalo, Grade 6, said, “If I’m prepared, there’s nothing to worry about”. She also added, “Practice is good for you”. A special thanks to Mrs. Susan Kurihara, QLS Speech Festival Advisor, for organizing and taking the lead role. Mrs. Kurihara told me that every student did well and that they all represented Queen Lili’uokalani School proudly. We would also like to thank Ms. Pualani Wilmington in helping to prepare and guide our student entries. Mrs. Kurihara’s and Ms. Wilmington’s hard work and dedication shined through in the confidence and the smiles on our students faces. Every student who participated received a sparkling commemorative medal. When asked, “What was the one thing that you have learned from this experience?”, Sheleg answered, “I feel good that I tried my best”. Isn’t this something we all can learn from? Great Job Team!



ELL (English Language Learner)

Learning English is Fun! After visits to our ELL class, I have been able to observe how our ELL students improve their English skills. I was impressed with the new teaching techniques and use of technology which has made learning English “fun”damentals rewarding and relevant. Under the cooperative teaching of Ms. Erica Kataoka and Ms. Suzanne Mitri, our ELL students have made tremendous gains. In fact, in this year’s report, 100% of Queen Lili’uokalani School’s ELL students have all demonstrated improved English proficiency in the Annual Measurable Achievement Objectives (AMAO) #1 rating scale. 84% is the states benchmark. All of our QLS ELL students participated in the LAS links assessment this year. In the AMAO #2 rating scale, it is desired that 8% of a school’s ELL student population pass the exit examination with proficiency. Our QLS ELL program passed this at 14%.! We would like to congratulate all of our ELL students who did so well this year. Thank you to Ms. Kataoka and Ms. Mitri for a perfect season!

ICE MACHINE

Nice to have good neighbors – Kaimuki Christian Church recently donated an ice machine to our school. This valuable donation enables us to have a clean and safe source of ice for the many uses we have at school. Mahalo to KCC School Principal Mike Gallagher and Pastor Ron



Arnold and his congregation who showed their generosity to our small school. Principal Yuen promptly shared the news by making everyone a strawberry smoothie! YUM!

Left to Right: Ice machine, Principal Mike Gallagher, QLS PCNC Lori Yamada, and Pastor Ron Arnold



What is a Student-Led Conference (SLC)?

by Deanne Yoshioka, Curriculum/Title I Coordinator



Have you seen the flier this week announcing student-led conferences (SLCs)? Or maybe you've seen the announcement in this newsletter about SLCs. Now you must be wondering, **“What are student-led conferences anyway?”**

I'm glad you asked! A student-led conference is an innovative and exciting way for students to share their progress with others. They work with their teachers to put together a progressfolio – a collection of work that shows progress in selected content areas. They then prepare a presentation in which they share their selected work samples with others – in this case, it's YOU!

In some schools, the SLC takes the place of the traditional parent-teacher conference, typically held during the fall (September/October). Because we are just starting out with this initiative, we have decided to ADD a conference this year. Our first SLCs will take place on:

Thursday, June 5, 2008.

If this date looks familiar, it's because it's the last day of school for students. HOWEVER, rather than reporting to school for the regular half-day session, **students and parents will be reporting to school during their scheduled conference time only.** If you are unable to make it on this day, you have the option of having someone else bring your child for the conference – a grandparent, aunty, uncle, other brother or sister, close friend or neighbor. Because it is a **student-led** conference, **your child needs to be there.** Also, the beauty of this is, your child can conduct the conference with you at home if you are not able to attend!

A detailed flier, time preference sheet and information about upcoming parent sessions will be sent home next week – be sure to check your child's backpack. Be on the look out!

If you have burning questions that just cannot wait, feel free to contact me at 733-4680 or Deanne_Yoshioka@notes.k12.hi.us.



UPCOMING SCHOOL EVENTS

FIELD DAY – Friday, May 16th

Field day is a biennial event we have at school that takes the place of a traditional Hawaiian May Day Celebration. The day will be filled with student physical activities from 9:00-11:30. We then break for lunch - students will be having their regularly scheduled school lunches or bring their own.

School Services Coordinator, Ms. Janice Oshiro, wants to make sure ***ALL students bring a water bottle to avoid dehydration.*** Ice water refills will be available during the day. ***Parent volunteers should report to the office conference room at 8:00 to set up, the activities starts promptly at 9:00.*** Thank you to all the parent volunteers who are coming to help!

Another highlight of the day is the Student Council Yearbook Social. Members are planning to host a social from 1:30 to 2:05 p.m. in the cafeteria. Students will be receiving their yearbooks and having fun exchanging autographs while enjoying refreshments sponsored by the PTSA. A nice ending to an active day!

TALENT EXTRAVAGANZA – Thursday, May 22nd

On Thursday, May 22 from 4:00 – 5:30 pm we will be having an event showing off what the students did in the After School Enrichment Programs this semester AND honoring our Very Special Volunteers at QLS. Please RSVP with your attendance on the enclosed flyer. Our Kids' Cooking Class will be making a healthy dinner with dessert.

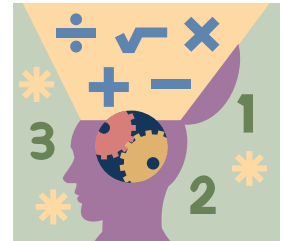


TALENT SHOW – Friday, May 23rd

The Student Council is sponsoring the annual Talent Show on **Friday, May 23 at 1:00 p.m. in the cafeteria.** This is not a contest as in previous years, but a talent showcase where everyone is encouraged to participate in – in adults! Please come and enjoy the show! It should be lots of FUN!!

CURRICULUM FAIR – Friday, May 30th

A Curriculum Fair will take place on **Friday, May 30th in the cafeteria from 5:00 – 6:00 p.m.** Math will be the subject area displayed, with Geometry being the focus. Each grade level (teacher K-6) will select one of their geometry benchmarks and display student work pertaining to that benchmark. Please come and see your child's work on display!



ARE YOU READY FOR SUMMER?

A 2008 Summer School Guide is included in this newsletter for your information, courtesy of the Family Resource Networking Center. Here is information from Wesley United Methodist Church: WUMC will offer a Summer Fun Program for children ages 6-12 years old. The program starts June 6 and runs through August 15, 2008. Daily, weekly and monthly rates are available. Call 732-3273 for more information. Pick up service from Kaimuki Middle and Punahou and Wilson summer schools. Billy R. Henson, Director.

GLO AWARDS

This month we had two GLO Award Assemblies - April 9th and April 30th to make up for the month of March which had none.

#4 - Quality Producer (The ability to recognize and produce quality performance and quality products) awarded on April 9, 2008



#3 – Complex Thinker (The ability to demonstrate critical thinking and problem solving) awarded on April 30, 2008.



Kaimuki Middle School Feeder School Tour – May 27th

A morning tour of Kaimuki Middle School has been offered to our 5th and 6th graders and their parents. Permission slips went out last month. Please see Mrs. Carolyn Ohara, Counselor, for more information.

SCHOOLHOUSE ROCK LIVE! Jr.

Hey parents and grandparents! Do you remember watching Saturday morning television when Sesame Street and Schoolhouse Rock were on? We were fortunate to have our PTSA sponsor a performance of Schoolhouse Rock Live! Jr. on Thursday, April 24th. This show is part of The Broadway Junior Collection performed by students from the Performing Arts Center of Kapolei. It was a fast paced

Queen Lydia Lili'uokalani School • 3633 Waialae Avenue, Honolulu, HI 96816 • ph: 733-4680 • fax: 733-4685

© Kevin Yuen, Principal ☺ Lori K. Yamada, Editor & PCNC ☺

musical play with songs that might be very familiar with you. See the 'ohana pics section for photos of the fun. Mahalo to Mrs. Deanne Yoshioka for arranging this special treat!



Hawaii Food Bank Annual Food Drive Mahalo for your donations!

Our Annual Hawaii Food Bank Food Drive collected more than 700 food items (450 pounds!) and \$20 in cash! This was the best food drive we've had in 4 years!

Congratulations to EVERYONE and especially to the Third Grade Class that collected 212 cans of food. They received an ice cream treat after lunch on Friday, April 18th AND all other students received a frozen ice pop for their efforts.

For the curious, here is the count per class: Pre K – 35, K – 32, 1 – 137 (which included \$20), 2 – 29, 3 – 212, 4 – 43, 5 – 108, 6 – 70. Congratulations again for a job well done by all!

Staff Appreciation Luncheon

A luncheon was held on Friday, May 2nd (P/C Day) in celebration of Teacher and Staff Appreciation Week (May 5-9). Good food and fun was had by all who attended. Mahalo to Mr. Kevin Yuen, Mr. Wilson Chun, Mrs. Amy Ogasawara-Fukumoto, Ms. Lori Yamada, and our PTSA for their contributions to this lunch. WE APPRECIATE ALL OF YOU!!

PTSA (Parent Teacher Student Association)

Mrs. Michelle Nakaya, President

Next *PTSA Meeting is on Monday, May 12th at 4:30 p.m.* in the QLS library. Topics of discussion: Ideas about future fundraisers and year end wrap up. Please attend. Your input is valuable.

At our last meeting, Ms. Valerie Sonoda, President of Hawaii State PTSA, came to educate us about PTSA as an organization, defining our mission, and lending us her support.

Mahalo to the PTSA for the support of the following events this school year:

**Staff Appreciation Luncheon
Schoolhouse Rock Live! Jr.
Barnes & Noble Book Fair –
which 80% of "wish list" books
were filled
Yearbook Social**

**Curriculum Night
Holiday Fair
Annual Picnic
Open House
Mr. Michael Wall - Percussionist**

SCC (School Community Council)

Next *SCC Meeting is Tuesday, May 20th at 4:00-5:30 p.m.* QLS library. SCC elections are held this month. *Please reply to the Call for Candidates flyer in this issue by May 20th.* Interested parties should come to the next meeting to see how the council works and volunteer for a position. We will determine the establishment of the concept of having a rotation system for classified and certificated members serving future terms.

PCNC (Parent Community Networking Center)

Ms. Lori Yamada

The Library Workroom is the location of our PCNC program. This new location is being used for our after school enrichment programs and other activities that will be determined soon. If you happen to see the Welcome Sign on the door, please come in for a visit – I can always find something for you to do.....



THE FAMILY RESOURCE NETWORK CENTER

Free publications are available at our Family Resource Network Center (FRNC) located in the Admin Office! This is a community resource open to the public. We hope you will find our FRNC to be

Queen Lydia Lili'uokalani School • 3633 Waialae Avenue, Honolulu, HI 96816 • ph: 733-4680 • fax: 733-4685

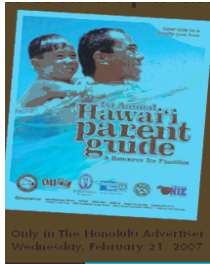
© Kevin Yuen, Principal ☺ Lori K. Yamada, Editor & PCNC ☺

an easily accessible place where you can find information and resources on children and family-related issues and concerns. This resource was developed with support from the University of Hawaii Center on the Family and the Department of Human Services. *Highlights for this month are: Special Needs and Physical Fitness. Info available:* H-KISS/Early Intervention Section, YMCA, and Hawaii Disability Rights Center.

COOL WEBSITES TO VISIT

www.loc.gov

Readable copies of rare children books and fun things to do online!



The Hawaii Parent Guide published by the Honolulu Advertiser is now ONLINE. You can download a copy on the Family Support website at: <http://familysupport.k12.hi.us/> This informative guide has everything you wanted to know about resources available in Hawaii for your keiki.

<http://familysupport.k12.hi.us>

Family Support Website



www.KaimukiHawaii.com

The latest happenings around town and our community.



MARK YOUR CALENDARS!

(Events, dates and times are subject to change – details to be announced)

May

2 – P/C Day – No School

12 – PTSA Mtg. 4:30 Library

16 – Field Day & Year Book Social

20 – SCC Mtg. 4:00 Library

22 – Talent Extravaganza 4-5:30 pm, Cafeteria

23 – Talent Show – Student Council 1:00 pm, Cafeteria

26 – Memorial Day – No School

30 – Curriculum Fair – 5:00-6:00 pm, Cafeteria

June

3 – Awards Assembly

4 – 6th Grade Graduation

5 – Last Day of School

Student Led Conferences – see flyer

FUN FREE THINGS TO DO WITH YOUR KEIKI

Academy of Arts Bank of Hawaii Free Sunday

The third Sunday of every month is Bank of Hawaii Sunday with free admission for all. Enjoy live music and dance performances, videos, storytelling and other family friendly entertainment. Take a self directed gallery hunt. Activities include make and take art objects for keiki and adults. Phone: 532-8700.

Kama'aina Sundays at 'Iolani Palace

Both the Palace Galleries and docent-guided tours of the first and second floors are free of charge of Hawai'i residents (bring your state ID or Hawai'i driver's license) on one Sunday (usually the first Sunday) of most months. Tickets will be distributed on a first come, first served basis. The first tour of the day starts at 9:00 a.m. and the last tour starts at 2:00 p.m. No reservations will be taken except for groups of 10 or more. Kama'aina Sundays are normally held on the first Sunday of the month, but check

ahead because it can be scheduled otherwise. Komo mai! Phone: 522-0822

First Friday Honolulu

Downtown-Chinatown Gallery Walk, 5-9 pm, every first Friday of the month. Downtown galleries and studios open their doors for an evening celebrating artists, art and art making of all kinds. Affordable parking rates are available in the Municipal Parking garages – Alii Place, Chinatown Gateway, Hale Pauahi, Harbor Court, Harbor Village, Kekaulike Courtyard, Kukui Plaza, Marin Tower and Smith-Beretania. Information: www.artsatmarks.com

Sunset on the Beach

Free movie, live entertainment and food booths on Waikiki Queen Surf Beach. Festivities start at 5 pm. Movie starts at 7:00 pm. Scheduled for the following weekend – May 24 & 25 – Movies yet to be determined at this printing. www.sunsetonthebeach.net

Kaimuki Public Library – NEW HOURS

1041 Koko Head Avenue
Honolulu, HI 96816 Phone 733-8422

Hours: Sun 10-5, Mon and Tues 10-8, Wed and Thur, 10-6, Fri Closed, Sat Closed. Borrow Books, videos & surf

the web!

MISCELLANEOUS

Hawaii Shotokan Karate

Beginner's Karate Classes at Lili'uokalani School Cafeteria. Mondays and Wednesdays at 5:30 p.m. Call 988-7128 for information and registration.

Email: hawaii-shotokan-karate@hotmail.com

Website: www.hawaii-shotokan-karate.com

Cornerstone Martial Arts

Teaching an eclectic system based on Jeet Kune Do, Shao Lin Kung Fu, and Chinese Kenpo with family values. Beginner's Classes at Lili'uokalani School Cafeteria. Tuesdays and Thursdays at 7:15 p.m. Pre-registration required by calling 735-3486. Website: HawaiiKungFu.com

Pump It Up! 561-1000

Inflatable Bouncers & Party Rentals. Owner is a QLS dad who donates his service to our school functions!

Email: jeffreyyrenner@yahoo.com

Website: www.pumpitup.bizland.com

Common Grace by Pastor Ron Arnold

Common Grace links volunteers from a local church with kids in a public school. The motto of Common Grace is "Matching the kindness of a local church with the needs of a kid in the public school." The first "partnership" between a church and a school was in 2003; it was between Kaimuki Christian Church and Queen Lydia Lili'uokalani Elementary. Now there are 36 church/school partnerships! For the past 5 years, volunteers from Kaimuki Christian Church, known as "Aunties" & "Uncles" or simply as "Buddies", have been spending an hour a week with a child at Lili'uokalani. We rely on the teachers for selection of Common Grace Kids, who secure permission from parents/guardians, and then seek to support the family and the school by being a caring friend. If you would like more information about Common Grace, go to www.commongrace.org or contact Dee Arnold at arnold.deanna@gmail.com or 779-5381.

Jokes of the Month

What do monsters make with cars?

A: Traffic Jam

Q: What do you call the elephant witch doctor?

A: Mumbo Jumbo

Q: Why did the pony cough?

A: He was a little hoarse!

Q: How do you know when a dog has been naughty?

A: It leaves a little poodle on the carpet!

Q: Where do Aliens keep their sandwiches?

A: In a Launch box

Q: Why did the spaceship land outside your bedroom?

A: I must have left the landing light on

Q: What do you call a vampire that lives in the kitchen?

A: Spatula!

Q: Why couldn't the skeleton go to the dance?

A: He had no body to go with!

How does the moon cut his hair?

A: e-clipse it!

Q: What did the frog order at McDonald's?

A: French flies and a diet Croak

Q: Why did the frog say meow?

A: He was learning a foreign language.

Q: When do ghosts usually appear?

A: Just before someone screams.

Q: What did the policeman say when a spider ran down his back?

A: "You're under a vest!"

Q: Why do dragons sleep during the day?

A: So they can fight knights.

QLS 'Ohana Photos



**Ka Lei Eggs Store in Kaimuki –
Egg Decorating on KHON Television
Morning Show - March 18, 2008**



GLO 4 Awards – April 9, 2008



**Mrs. Kurihara & Ms.
Wilmington at the Speech
Festival – April 26, 2008**



GLO 3 Awards – April 30, 2008



Hawaii Food Bank Food Drive - April 18, 2008



School House Rock - April 24, 2008





CALL FOR CANDIDATES SCC (School Community Council)

As a School Community Council Member, you can contribute to the education of students in your school. Education is a partnership involving parents, students, school staff, the Board of Education, business, and the community. Your involvement in the council gives you the opportunity to strengthen that partnership, and to be part of a dedicated team working to ensure a high quality and accountable education system for the children of Hawai'i. Your participation can make a difference!

Successful SCCs do not organize to "run the school." SCCs focus their responsibilities on school improvement and student achievement. They tend to see themselves as "trustees or facilitators of the school's vision and mission", and are clear about what the school stands for and what it wants for students.

Members have the responsibility to refer confidential or personnel issues to their school principal. They also review and analyze school data and strategies as stated in the Academic and Financial Plan and provide recommendations to the principal.

Please attend our next meeting on Tuesday, May 20th at 4:00 p.m. in the QLS Library or send back the form below with names of persons who might be interested in serving a two year term with our Council. We are currently seeking qualified candidates for the following role groups:

- Teachers – who bring practical knowledge about curriculum and instructional strategies, as well as knowledge about the school's history and culture.
- Non-Certificated Staff – includes classified staff, support services personnel as well as other part-time and contracted employees of the school – they bring knowledge of school operations and support services.
- Students – usually selected by the Student Council, they offer a range of opinions often distinct from adult perspectives.
- Parents – individuals whose children currently attend the school
- Community – individuals in the school's geographic area, owning, operating or working in a business within the schools' community and school alumni

✂-----✂
**Cut and return this portion with your child no later than Monday, May 19th
OR personally deliver this form at the May 20th meeting.**

I am interested in serving on Queen Liliuokalani School's SCC.

Name: _____ **Phone:** _____

Email: _____

To represent (Please check one): ☐ Teachers ☐ Non-Certificated staff
☐ Parents ☐ Community

If Parents is checked, please indicate the following:


Child's Name: _____ **Grade:** _____

Teachers: Please put forms in SCC box in the office by May 19th – Mahalo!

May 2008

Sunday	Monday	Tuesday	Wednesday	Thursday	Friday	Saturday
				1	2 P/C DAY NO SCHOOL	3
4	5	6	7	8	9	10
11 ♥ Mother's Day ♥	12 PTSA Mtg 4:30 pm Library	13	14	15	16 FIELD DAY All Day School Activities & Year Book Social	17
18	19	20 SCC Mtg. 4:00 pm Library	21 Kaimuki Neighborhood Board Mtg. 7 pm Cafeteria	22 TALENT EXTRAVAGANZA 4:00 - 5:30 pm Cafeteria	23 TALENT SHOW 1:00 p.m. Cafeteria	24
25	26 HOLIDAY MEMORIAL DAY	27 Kaimuki Middle School Tour	28	29	30 CURRICULUM FAIR 5:00 - 6:00 pm Cafeteria	31

June 2008

Sunday	Monday	Tuesday	Wednesday	Thursday	Friday	Saturday
1	2	3 AWARDS ASSEMBLY 8:30 AM	4 GRADE 6 Graduation 	5 LAST DAY FOR STUDENTS Student Led Conferences	6 LAST DAY FOR TEACHERS	7
8	9	10	11	12	13	14
15 ♥ Father's Day ♥	16	17	18 Kaimuki Neighborhood Board Mtg. 7 pm Cafeteria	19	20	21
22	23	24	25	26	27	28
29	30	School Starts On Monday, July 28 th Enjoy your Summer Break!				