



Mayor's Office of Culture & the Arts

# CALENDAR of EVENTS

"LIKE" us on FACEBOOK, Honolulu Mayor's Office of Culture and the Arts, for the latest news and updates.

www1.honolulu.gov/moca/ moca-info@honolulu.gov MOCA event hotline: 808-768-6666

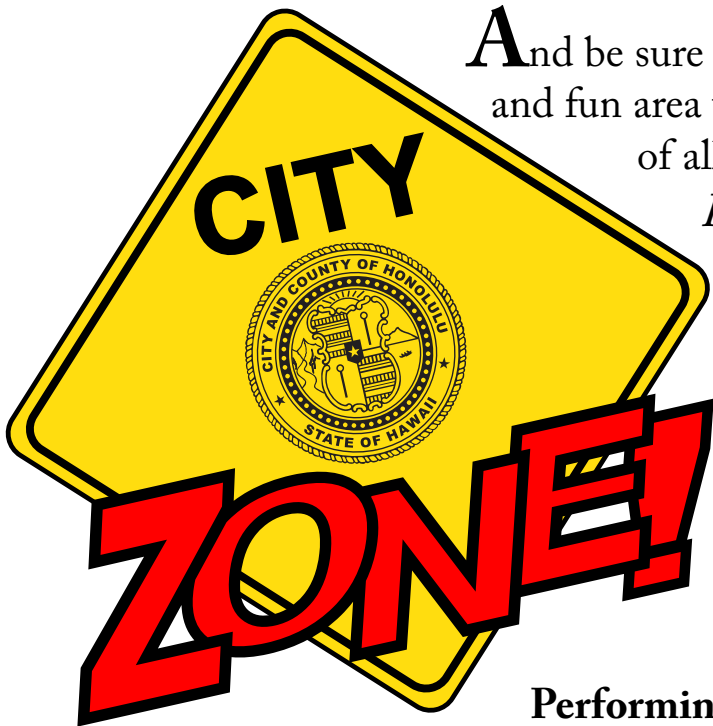
*O ka hubū 'ino ka mea e ola 'ole ai (Rage is a thing that does not produce life)*

## Hawai'i Children and Youth Day

October 5, 10 a.m. - 3 p.m.

On the Frank F. Fasi Civic Center grounds, the State Capitol and surrounding Capitol District

- Educational Activities • Games & Rides*
- Non-stop Entertainment • Demonstrations*
- Guided Tours • Food and Drink Vendors*
- Fun for the entire family!!!*



And be sure to stop by the new **City Zone!** This informative and fun area will have displays and presentations, for children of all ages, from the following City departments:

*Honolulu Police Department; Honolulu Fire Department; Honolulu Emergency Services Department; Department of Emergency Management; Board of Water Supply; Department of Transportation Services; Department of Community Services; Honolulu Authority for Rapid Transit; and the Neighborhood Commission Office*

### Performing on the City Zone Stage:

10:00 - 10:30 a.m.	Halau Ka No'eau	12:45 - 1:00 p.m.	Nick La'a
10:30 - 11:00 a.m.	Keilana Mokulehua	1:00 - 1:30 p.m.	#BoomFiyah
11:00 - 11:45 a.m.	Royal Hawaiian Band Glee Club	1:30 - 2:15 p.m.	Hui Maka'i Honolulu Police Department Retirees & Active Duty Personnel
12:00 - 12:45 p.m.	Ahi Wela Honolulu Fire Department	2:15 - 3:15 p.m.	Eric Ho Band

# Attention Artists and Culture and Arts Organizations!

The Mayor's Office of Culture and the Arts is requesting proposals for their production and operating grants, and commissions for their Art in City Buildings Program.

Go to <http://www1.honolulu.gov/moca/news.htm>  
or call (808) 768-6622 for more information.

## Exhibits

Honolulu Hale  
530 S King St

Monday thru Friday, 8 a.m. - 4:30 p.m.

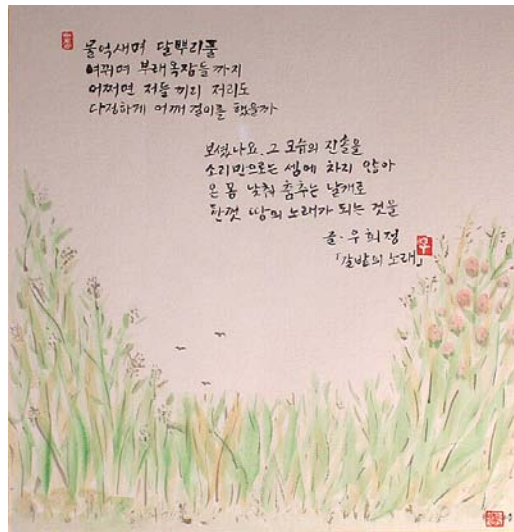
## Poetry and Art Exhibition

Presented by

Korean Literature Association of Hawai'i

September 30 - October 9, Honolulu Hale Courtyard

On display will be original poems of various themes accompanied by paintings, drawings, photographs and Ikebana.



Images are from previous exhibits

## Kuhio Beach Hula Show

6:30 - 7:30 p.m. at the Kuhio Beach Hula Mound, near the Duke Kahanamoku statue, beachside at Uluniu & Kalākaua Avenue in Waikiki, weather-permitting. Outdoors, casual. Seating on the grass; beach chairs, mats, etc. okay. Cameras are welcome.

### Tuesdays

Ainsley Halemanu and  
Hula Halau Ka Liko O Ka Palai

### Thursdays

Joan "Aunty Pudgie" Young and  
Puamelia

### Saturdays

Oct 4 Shirley Recca and Halau  
Hula O Namakahulali

Oct 11 Coline Aiu and Halau  
Hula O Maiki

Oct 18 Kapi'olani Ha'o and Halau  
Ke Kia'i A O Hula

Oct 25 Lilinoe Lindsey and  
Ka Pa Nani O Lilinoe

Schedule is subject to change without notice. For more info on hula shows, call 808-843-8002

## Royal Hawaiian Band

~ Royal Hawaiian Center ~  
Royal Grove, 1:00 p.m.

Oct 2 & 16

~ 'Iolani Palace ~

Oct 3, 10, 17, 24 & 31 12 noon

~ Kapi'olani Bandstand ~

Oct 5, 12 & 26, 1:00 p.m.

~ Ala Moana Centerstage ~

Oct 8 & 22, 11:00 a.m.

~ Oct 2, 5:00 p.m. ~

Outside the Honolulu Zoo at  
the Gandhi Statue

~ Oct 4, 9:00 a.m. ~

Queen Emma Summer Palace

~ Oct 5 ~

Children/Youth Day

State Capitol Rotunda, 9:15 a.m.

~ Oct 11, 12:00 noon ~

Town Center of Mililani

~ Oct 19, 2:00 p.m. ~

Windward Mall

~ Oct 25, 12:00 noon ~

Pearlridge Center - Uptown

For performance updates and more info call 808-922-5331