

# Kaimuki Orchid Society, Inc.

P.O. Box 10203

Honolulu, HI 96816

[kaimukiorchidsociety@hotmail.com](mailto:kaimukiorchidsociety@hotmail.com) [www.kaimukiorchid.org](http://www.kaimukiorchid.org)



## JULY NEWSLETTER

Executive Board Meeting: 1<sup>st</sup> Monday of the month, 7:00 PM

General Society Meeting: 1<sup>st</sup> Tuesday of the month, 7:00 PM

All meetings are at the Kilauea District Park

**PLEASE CHECK TO SEE IF YOU HAVE PAID YOUR DUES**

**This can be done at the membership table**

**PLEASE CHECK THE ROSTERS AT THE END OF THIS NEWSLETTER FOR YOUR ASSIGNMENTS**

**PLEASE CHECK TO SEE IF YOU ARE LISTED CORRECTLY**

**CONTACT GRACE FOR DISCREPANCIES OR ADDITIONS**

### Executive Board

<b><u>PRESIDENT</u></b> Alan Mai'i 377-5005 <a href="mailto:alanmai@hawaii.rr.com">alanmai@hawaii.rr.com</a>	<b><u>1<sup>st</sup> VICE PRESIDENT</u></b> Phil Sharp 373-3998 <a href="mailto:sharps-solutions@hawaii.rr.com">sharps-solutions@hawaii.rr.com</a>	<b><u>2<sup>nd</sup> VICE PRESIDENT</u></b> Lisa Abbott 383-9593 <a href="mailto:labbott@hawaii.rr.com">labbott@hawaii.rr.com</a>
<b><u>TREASURER</u></b> Ralph Kobayashi 737-1882	<b><u>RECORDING SECRETARY</u></b> Joanie Fujishiro 734-3698 <a href="mailto:jefuji@aol.com">jefuji@aol.com</a>	<b><u>CORRESPONDING SECRETARY</u></b> Grace Kobayashi 737-1882 <a href="mailto:gykobayashi@hotmail.com">gykobayashi@hotmail.com</a>
<b><u>Director</u></b> Judy Nakamura 373-9197 <a href="mailto:judyannakamura@hotmail.com">judyannakamura@hotmail.com</a>	<b><u>Director</u></b> Jill Cavanaugh 732-2993 <a href="mailto:jc8886@yahoo.com">jc8886@yahoo.com</a>	<b><u>Director</u></b> Larry Ward <a href="mailto:cech@pixi.com">cech@pixi.com</a>



### **Board Meeting:**

Date: . . . . Monday, August 2, 2010  
Time: . . . . 7:00 pm  
Location: . . . Kilauea District Park  
Host: . . . . Kawamoto Nursery  
Please wear your KOS shirts!



### **General Meeting:**

Date: . . . . Tuesday, August 3, 2010  
Time: . . . . 7:00 pm  
Location: . . . Kilauea District Park  
Speaker: . . . TBA  
Topic: . . . . TBA

**PLEASE Don't FORGET YOUR NAME TAGS!**



### **Newsletter:**

If anyone receiving this newsletter via USPS has an email address, please send to: [kaimukiorchidsociety@hotmail.com](mailto:kaimukiorchidsociety@hotmail.com). If you have access to a computer, even if you do not have an email address, please let us know—saves us paper and postage (not to mention time)! The newsletter is posted on our website at [www.kaimukiorchid.org](http://www.kaimukiorchid.org). Those without email or access to a computer will continue to receive their newsletters as usual.



### **Where are we?**

For those of you who only communicate with us via the web and would like to attend one of our meetings, a map detailing our location is in the map section of our Society's website, [www.kaimukiorchid.org](http://www.kaimukiorchid.org).



### **KOS Dues Renewal:**

Be sure to renew your 2010 membership. Please check with Phil Sharp or Ralph and Grace Kobayashi for your membership status. Membership status is based on the calendar year and renewals of \$20 per person, \$10 for additional members at the same address. Renewals will be collected throughout the year. Only new members joining the Society in the last quarter of the year will have their membership extended to the following year.



### **KOS Shirts:**

The sizes available for sale are: small, large, x-large, xx-large. There are no medium sizes. The shirts are \$7.00 for the first one, and \$13.00 for any additional shirts.



## Name Tags:

Please see Phil at the admin table if you have lost your name tag. Remember, you need your name tag in order to qualify for drawings and special deals presented at the meetings. There is a \$5.00 replacement fee for lost tags. Suggestions for remembering where your name tag is: Keep it on the door knob where you exit your home; keep it in the glove compartment of your car. How do you remember where your name tag is? Send in your suggestions to our email [kaimukiorchidsociety@hotmail.com](mailto:kaimukiorchidsociety@hotmail.com).



## Pre-Meeting Activities:

- Purchase shirts.
- Register your change of address
- Temporary Name Tags are issued to those who have lost or forgotten them.
- Signup new members.



## New Members and Guests:

Aloha and welcome to our new member Alexa Alexander who joined at our July 6<sup>th</sup> meeting. Alexa is interested in building her orchid collection and learning about orchids.

All new members and first time guests receive an orchid plant from the Society.



## Betty Crocker Landscape Award:

KOS received an Award of Honor in a competition sponsored by Scenic Hawaii Inc., an organization that annually recognizes various landscape beautification projects throughout the state. Our entry, a presentation describing the KOS orchid display project at the Honolulu Zoo, was prepared and submitted by VP Lisa Abbott for competition in the 'Volunteer, Community, and Non-Profit Gardens' category. Other categories were "Private Gardens", "Professional Gardens", and "Xeriscapes Gardens".

Scenic Hawaii's objectives include "...promotion and execution of programs that protect Hawaii's natural beauty, preservation and enhancement of landscapes and streetscapes, protection of historical and cultural resources, scenic views, Hawaii's shoreline, as well as promotion of public education on the economic, social, and cultural benefits of protecting and enhancing scenic resources and community appearances".



Competition results were not disclosed until awards ceremony on June 28, 2010. Lisa Abbott, Kean Matsumoto, and Alan Maii accepted the **2010 Betty Crocker Landscape Awards, Award of Honor, Community Gardens, Volunteer Community Non-Profit** award on behalf of KOS. Our entry competed with several well known entities including the Pana'ewa Rainforest Zoo and Gardens (Big Island), Wahiawa Botanical Gardens, and the Foster Gardens Conservatory. Society members were informed of the award at the July general meeting by President Alan Maii who recognized all Zoo Project volunteers and thanked them for their contributions.



## General Meeting – July 6, 2010

Meeting was opened by President Alan Mai'i at 7:10 pm.

Alan asked if there were any new members or guests and there were none.

Alan made the following announcements:

- Sat., July 17<sup>th</sup> – at Kahala Mall – Center Court – 2-5 pm – KOS will have a display and flyers to advertise our society and the upcoming show. Alan and Lisa Abbott asked for volunteers to help and for contributions of orchid plants that were ready for display.
- Lisa Abbott entered KOS in a contest for community gardens and we received the "2010 Betty Crocker Landscape Award" – 2<sup>nd</sup> place, award of honor from "Scenic Hawaii Inc. for their community garden at the zoo.

Guest Speaker: - Randy Tajima.

Topic: How to Prepare a Plant for a Display

- Plant should stand by itself and try to have the flower centered and not falling over.
- Use florist wire or telephone wire, bamboo stakes, paper covered wire or flower clips to help achieve this.
- Stakes should preferably be green or olive color to blend in and not stand out.
- Only stake if you have to, but make sure your plant is tied up, staked well and looks neat.
- When staking, leave the stakes long while inserting and then cut them.

- Don't cut the stakes first.
- Don't let wires, stakes, flower pins etc. show too much.
- Make a single tie and do very little wrapping and cut off any excess.
- Randy recommends the "Linesman pliers" at Longs.
- Use a decorative pot, stagger heights and textures and put in some greens in the bottom of the plant.
- Spray the plant for bugs, clean up foliage, leaves and flowers.
- Remove yellow leaves if you feel it will look better.
- Use whole milk on a paper towel and wipe the plant leaves to give them just enough shine.
- If placing your plant on a table try to make sure the flower is at eye level to show it best, about 5 feet for most people.
- You may need to raise the plant up slightly and also tilt the plant back slightly so that you can see the flower straight on.
- Before bringing your plant for display water it well and then drain for about ½ hour because it will be at the show for 3-4 days.
- Use crumpled up newspaper to wrap around your pot and then set it in a larger more decorative pot.
- If your plant is damaged in transit – i.e. a flower breaks off – put the flower in the bottom of the pot and you will not be disqualified.
- You can use props when displaying your plant such as tree branches or even things like a little wheel barrow.
- Try to separate your display plants from other people's orchids by using plants that are only green or green and white to border your plant and set it apart.
- Use a cloth on the table underneath your display.
- Do not use a plain black or white cloth as this will show everything, but rather try to get a Hawaiian print in blacks, browns and white.

Show planning was the next order of business. Alan asked everyone who volunteered for the show to check the lists as to where you were assigned, who was your team leader and what your job description is. Everyone was requested to sign a "waiver of liability" before volunteering for the show and the papers were passed out and turned back in while refreshments were served.

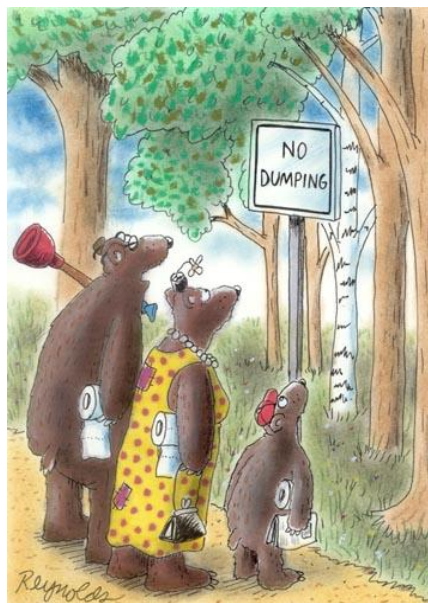
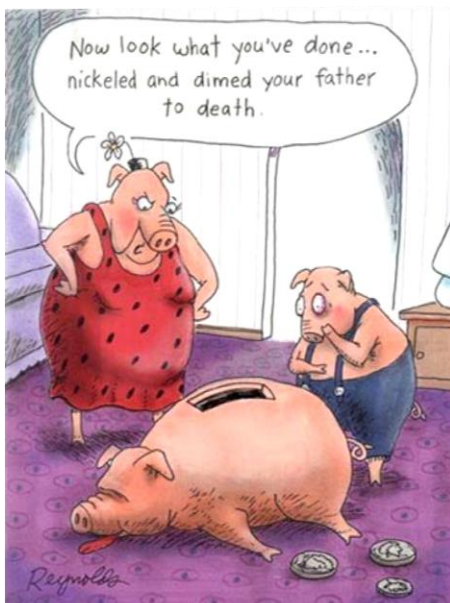
Ralph announced the prizes being given in a raffle for all those who volunteer at the show which are \$25 gift certificates from Longs (about 40) and one grand prize of a 2 night stay at the Hilton time share (worth about \$1200). He reminded everyone they must sign the waiver of liability, they must sign in and sign out during the shift at the show and thanked all of the people who had already volunteered which was 70 people. He asked if people could bring greens for decorating at the show which must be green or green and white, but no colors. He also indicated to everyone to please wear their KOS shirts and name tags, to please park on the street and check the signs so no one gets a ticket when coming to volunteer. He announced that there will be bottled water supplied, but no meals.

The winners of the silent auction were announced, the plants were judged and the meeting was closed around 9:00 pm.

Respectfully submitted,

/s/ Joan E. Fujishiro  
Recording Secretary

#### Some Visual Humor





## American Orchid Society Judging:

Please bring your blooming plants to be judged.

They need to be registered before the meeting starts.

We have four categories for culture awards:

- |            |                             |                    |
|------------|-----------------------------|--------------------|
| Category 1 | Members growing orchids for | 1 – 5 years        |
| Category 2 | Members growing orchids for | 6 – 10 years       |
| Category 3 | Members growing orchids for | 11+ years          |
| Category 4 | Members growing orchids for | From KOS Functions |

- Bring your blooming (required) plants in by 6:45
- Fill out a plant registration form
- Place your plant on the appropriate table

**GOOD LUCK!!**



## Culture Award Winners for July: (See their pictures on the web!!)

Category 1:	Hawaiian Red Velvet 'Walby' Jill Cavanaugh
-------------	--

**Mahalo to Randy Tajima for his judging and plant commentary**

Category 2:	BLC Willette Wong Deanna Hayashida
-------------	---------------------------------------

Category 3:	BLC Willette Wong 'The Best' George and Masako Ogawa
-------------	--

Category 4:	Broughtonia Sanguinea 'Star Splash x Sibling' George and Masako Ogawa
-------------	---



## Please Kokua:

- Sign up for donating refreshments — the month and, if known, what you are bringing.
- Bring enough to serve at least 12, small servings.
- Have items ready to serve—cut pies and cakes.
- Label all utensils and containers and remember to take them home.
- You may be asked to change the date of your donation — there may be too many people signing up for a particular month.
- Do not bring “soupy” or wet snacks unless they are pre-served or appropriate containers are provided — example, small cups.
- Do not forget when you will be providing snacks. We will not call to remind you.
- The Society provides hot and cold drinks (cups included), small snack plates, napkins, eating utensils. To defray this expense, we have a donation jar and thank all who make a donation when you pick up your snacks.



## Thank you for your donation to the refreshment table at the July meeting:

Chun, Ruth	Kimura, Deenie	Ogawa, Masako
Dang, Jennie	Leong, Greg	Oki, Jean
Herring, Chris	Ma, Beaudine	Okino, Joan
Ho, Alma	Nakamura, Judy	Tobita, Grace
Ikawa, Elinor	Nitta, Shanlyn	



## Thank you for your donation to the refreshment table at the June meeting:

Chun, Ruth	Kimura, Deenie	Ogawa, Masako
Dang, Jennie	Leong, Greg	Oki, Jean
Herring, Chris	Ma, Beaudine	Okino, Joan
Ho, Alma	Nakamura, Judy	Tobita, Grace
Ikawa, Elinor	Nitta, Shanlyn	



## Read the newsletters:

Every so often, unannounced, we will insert an obvious error into the newsletter, NOT the website. THIS month, there is no error.

There is, however, a change to the newsletter. The three people who [email me](mailto:email me) at [sharps-solutions@hawaii.rr.com](mailto:sharps-solutions@hawaii.rr.com), with the correct



answer, will receive a gift certificate from Kawamoto Nursery. You also MUST have paid your dues in order to qualify. The certificates can ONLY be redeemed at the nursery, not at our monthly plant sales. The answer will be given out at the next meeting.

---



## KOS Orchid Show Update:

Please consider bringing a plant to the show for display. Randy Tajima's suggestions on how to put a presentation together are found in the minutes section of this newsletter. There are some GREAT suggestions. A real big MAHALO and recognition go to Joanie Fujishiro for her excellent note taking. It really helped!

**Your work assignments for the show are on the last three pages of this newsletter. They are listed by day and time. Please call or email Grace Kobayashi if there is a discrepancy or you have not signed up and wish to do so. [kaimukiorchidsociety@hotmail.com](mailto:kaimukiorchidsociety@hotmail.com), 737-1882 or contact a board member.**

---



## Editor's Note:

We know that many of you have terrific blooming orchids at home. The only problem you have is they do not bloom at the beginning of the month when you could bring them to be judged and win an additional orchid. To that end, we will be initiating a new section in our newsletters that will allow you to 'show off' your orchids that bloom before or after our monthly meetings. There are no prizes for them, just the satisfaction of showing others that you are just as proficient as those whose plants make it to the judging table.

All that is required is a short article of two paragraphs and one or two pictures of you blooming plant. I will edit both the article and the photos to put you and your plant in its best light. Here is what is requested. You need not fill the entire list but the information being asked for would give the members some idea of what you did to make this plant a success.

- |                               |                  |                      |
|-------------------------------|------------------|----------------------|
| ▪ Name of orchid              | ▪ Medium         | ▪ Sun/shade          |
| ▪ Date of purchase or receipt | ▪ Fertilizer     | ▪ Circulation - wind |
| ▪ Date of repot               | ▪ Watering cycle | ▪ Commentary         |
- 



## AOS Corner:

Lynn Fuller, the new Affiliated Society Chairperson has given me this opportunity to introduce myself to each of the Affiliated Society members through the [AOS Corner](#). I am your new AOS President and have the pleasure to serve each of you for a one year term.

Who am I? Well, I am an orchid hobbyist like most of you. I grow mainly Cattleya species with some multi-flora Paphiopedilums to take up the darker spaces in my greenhouses. In order to support my "*orchid habit*," I own a Civil-Environmental Engineering firm located in southern New Jersey.

The Affiliated Societies are the backbone of the American Orchid Society. We all probably started as a member of a local society to find more information about these beautiful flowers called, orchids. My local society is the Sandpiper Orchid Society, located near Atlantic City, New Jersey. This great group of orchid lovers has assisted me in many ways to cultivate better orchids.

Walter Off, the co-owner of a local commercial orchid business helps to organize the Sandpiper Orchid Society and has been a tremendous assistance to new and long time growers. Walt provides information on local conditions that improve culture and eliminates the trial and error methods to find the right fertilizer for our local conditions.

I am sure each Affiliated Society has a local commercial grower that is involved with their group. Support them so that they are there to provide the best cultural information for your area.

Many commercial growers provide discounts to AOS members. Ask them to see if they participate in this program. If you are like me, I pay for my AOS membership with discounts from orchid purchases.

One of my initiatives is to provide better communication between the Affiliated Societies and the national organization. All too often, the AOS Trustees come to a Show that has been organized by an Affiliated Society, become engrossed in meetings and never mingle with our local members. After organizing the Show, raising funds to rent the venue needed, and all the backbreaking work to set up exhibits, it would be nice to be able to interact with your national leaders. It is my goal to encourage this discourse.

The Merritt Huntington Memorial Symposium is being held in Virginia Beach, Virginia from October 27 – 31, 2010. This will be a great event. Please consider joining us at the Show. The hotel has given the event planners great prices so come for the weekend. There are international speakers from France and Germany. It is a once in a lifetime chance to hear their words of wisdom about orchid culture.

Thank you again for affording me the opportunity to serve you as President. It is a great Society of wonderful people. Join us. Become a member of the American Orchid Society.

Susan Taylor  
Orchids Editor, BellaOnline  
Kiva.org - Loans That Change Lives

# WHAT'S COMING UP

## July

---

29	Thu	Set up for annual show; 9:00 am; Star of the Sea
30	Fri	KOS Show; 9:00 am to 5:00 pm; Star of the Sea
31	Sat	KOS Show; 9:00 am to 5:00 pm; Star of the Sea

## August

---

1	Sun	KOS Show; 9:00 am to 4:00 pm; Star of the Sea Take down for annual show; 3:00 pm;
2	Mon	KOS Board meeting, Kilauea District Park, 7:00 pm
3	Tue	KOS General meeting, Kilauea District Park, 7:00 pm Host: Kawamoto Nursery Garden Supplies Sale Raffle for Annual Show Fund

## September

---

6	Mon	KOS Board meeting, place to be announced, 7:00 pm
7	Tue	KOS General meeting, Kilauea District Park, 7:00 pm Speaker: – Bernie Cagauan Topic: - Grammatophyllum Garden Supplies Sale Raffle for Annual Show Fund

## October

---

4	Mon	KOS Board meeting, Kilauea District Park, 7:00 pm
5	Tue	KOS General meeting, Kilauea District Park, 7:00 pm Speaker: - Debi Soutar, Orchids N Paradise (Also an accredited AOS judge) Garden Supplies Sale Raffle for Annual Show Fund

## November

---

1	Mon	KOS Board meeting, TBA, 7:00 pm
3	Wed	KOS General meeting, Kilauea District Park, 7:00 pm Speaker: - Roy Tokunaga, H&R Nurseries Nomination and Election of Officers Garden Supplies Sale Raffle for Annual Show Fund

## December

---

6	Mon	KOS Board meeting, Kilauea District Park, 7:00 pm
7	Tue	KOS General meeting, Kilauea District Park, 6:30 pm End of Year Potluck and installation of officers Garden Supplies Sale Raffle for Annual Show Fund

## January

---

23	Sun	KOS Banquet/Brunch @ Hale Ikena – Sign In begins at 9:30
----	-----	--

**THE 'W' COLUMN IS FOR WAIVERS – YOU MUST HAVE A SIGNED WAIVER TO WORK**

**Kaimuki Orchid Society Friday AM Work Assignments**

Last	First	Day	Date	Time	Station & Chair	W
Mai'i	Alan	Fri	30-Jul	A/PM	9 Traffic Control - Alan Mai'i	X
Steele	Dave	Fri	30-Jul	AM	1	X
Fujioka	Sue	Fri	30-Jul	AM	1 Check In and Information Desk - Grace Kobayashi	
Nakamura	Sharon	Fri	30-Jul	AM	1 Check In and Information Desk - Grace Kobayashi	
Oki	Jean	Fri	30-Jul	AM	1 Check In and Information Desk - Grace Kobayashi	X
Oki	Ron	Fri	30-Jul	AM	1 Check In and Information Desk - Grace Kobayashi	X
Kim	Alice	Fri	30-Jul	AM	2 Entrance - Larry Ward	
Lupton	Sandra	Fri	30-Jul	AM	2 Entrance - Larry Ward	
Okino	Lois	Fri	30-Jul	AM	2 Entrance - Larry Ward	X
Pang	Letty	Fri	30-Jul	AM	2 Entrance - Larry Ward	X
Ward	Larry	Fri	30-Jul	AM	2 Entrance - Larry Ward	X
Cavanaugh	Curt	Fri	30-Jul	AM	3 Holding Area and Plant Valet Service - Curt Cavanaugh	X
Itoman	Harriet	Fri	30-Jul	AM	3 Holding Area and Plant Valet Service - Curt Cavanaugh	
Itoman	Robert	Fri	30-Jul	AM	3 Holding Area and Plant Valet Service - Curt Cavanaugh	X
Leong	Greg	Fri	30-Jul	AM	3 Holding Area and Plant Valet Service - Curt Cavanaugh	X
Nakamura	Betty	Fri	30-Jul	AM	3 Holding Area and Plant Valet Service - Curt Cavanaugh	X
Tang	Shirley	Fri	30-Jul	AM	3 Holding Area and Plant Valet Service - Curt Cavanaugh	X
Ho	Alma	Fri	30-Jul	AM	4 Host and Hostesses - Alan Mai'i	X
Suzuki	Michiko	Fri	30-Jul	AM	4 Host and Hostesses - Alan Mai'i	X
Suzuki	Michiko	Fri	30-Jul	AM	4 Host and Hostesses - Alan Mai'i	X
Abbott	Lisa	Fri	30-Jul	AM	4 Host and Hostesses - Alan Mai'i (Hawaii Kai Volunteers)	
Dang	Jennie	Fri	30-Jul	AM	5 Potting Workshop - Phil Sharp	X
Higo	Kim	Fri	30-Jul	AM	5 Potting Workshop - Phil Sharp	X
Nitta	Sharilyn	Fri	30-Jul	AM	5 Potting Workshop - Phil Sharp	X
Sharp	Phil	Fri	30-Jul	AM	5 Potting Workshop - Phil Sharp	X
Cavanaugh	Jill	Fri	30-Jul	AM	6 Potting Workshop - Jill Cavanaugh	X
Donnan	Muriel	Fri	30-Jul	AM	7 Silent auction and KOS shirt sales - Grace Kobayashi	X
Jay	Donald	Fri	30-Jul	AM	7 Silent auction and KOS shirt sales - Grace Kobayashi	X
Kutsunai	Diana	Fri	30-Jul	AM	8 Exit - Judy Nakamura	
Lee	Winifred	Fri	30-Jul	AM	8 Exit - Judy Nakamura	X
Miwa	Steph	Fri	30-Jul	AM	8 Exit - Judy Nakamura	X
Nakamura	Judy	Fri	30-Jul	AM	8 Exit - Judy Nakamura	
Ozawa	Gayle	Fri	30-Jul	AM	8 Exit - Judy Nakamura	X
Wong	Dick Wah	Fri	30-Jul	AM	8 Exit - Judy Nakamura	X
Wong	Kayoko	Fri	30-Jul	AM	8 Exit - Judy Nakamura	X

**Kaimuki Orchid Society Friday PM Assignments**

Last	First	Day	Date	Time	Station & Chair	W
Abbott	Lisa	Fri	30-Jul	PM	1 Check In and Information Desk - Grace Kobayashi	
Fujioka	Sue	Fri	30-Jul	PM	1 Check In and Information Desk - Grace Kobayashi	
Nagamine	Sheila	Fri	30-Jul	PM	1 Check In and Information Desk - Grace Kobayashi	X
Kim	Alice	Fri	30-Jul	PM	2 Entrance - Larry Ward	
Lupton	Sandra	Fri	30-Jul	PM	2 Entrance - Larry Ward	
Okino	Lois	Fri	30-Jul	PM	2 Entrance - Larry Ward	X
Pang	Letty	Fri	30-Jul	PM	2 Entrance - Larry Ward	X
Ward	Larry	Fri	30-Jul	PM	3 Entrance - Larry Ward	X
Cavanaugh	Curt	Fri	30-Jul	PM	3 Holding Area and Plant Valet Service - Curt Cavanaugh	X
Itoman	Robert	Fri	30-Jul	PM	3 Holding Area and Plant Valet Service - Curt Cavanaugh	X
Leong	Greg	Fri	30-Jul	PM	3 Holding Area and Plant Valet Service - Curt Cavanaugh	X
Nakamura	Betty	Fri	30-Jul	PM	3 Holding Area and Plant Valet Service - Curt Cavanaugh	X
Seymour	Coco	Fri	30-Jul	PM	3 Holding Area and Plant Valet Service - Curt Cavanaugh	
Seymour	George	Fri	30-Jul	PM	3 Holding Area and Plant Valet Service - Curt Cavanaugh	
Ho	Alma	Fri	30-Jul	PM	4 Host and Hostesses - Alan Mai'i (Hawaii Kai Volunteers)	X
Dang	Jennie	Fri	30-Jul	PM	5 Potting Workshop - Phil Sharp	X
Higo	Kim	Fri	30-Jul	PM	5 Potting Workshop - Phil Sharp	X
Sharp	Phil	Fri	30-Jul	pm	5 Potting Workshop - Phil Sharp	X
Cavanaugh	Jill	Fri	30-Jul	PM	6 Potting Workshop - Jill Cavanaugh	X
Nakamura	Judy	Fri	30-Jul	PM	8 Exit - Judy Nakamura	
Wheeler	Barry	Fri	30-Jul	PM	8 Exit - Judy Nakamura	X
Wheeler	Paula	Fri	30-Jul	PM	8 Exit - Judy Nakamura	X
Wong	Dick Wah	Fri	30-Jul	PM	8 Exit - Judy Nakamura	X
Wong	Kayoko	Fri	30-Jul	PM	8 Exit - Judy Nakamura	X

### Kaimuki Orchid Society Saturday AM Assignments

Last	First	Day	Date	Time	Station & Chair	W
Mai'i	Alan	Sat	31-Jul	A/PM	9 Traffic Control - Alan Mai'i	X
Oki	Jean	Sat	31-Jul	AM	1 Check In and Information Desk - Grace Kobayashi	X
Oki	Ron	Sat	31-Jul	AM	1 Check In and Information Desk - Grace Kobayashi	X
Young	Gloria	Sat	31-Jul	AM	1 Check In and Information Desk - Grace Kobayashi	
Kim	Alice	Sat	31-Jul	AM	2 Entrance - Larry Ward	
Okino	Lois	Sat	31-Jul	AM	2 Entrance - Larry Ward	X
Pang	Letty	Sat	31-Jul	AM	2 Entrance - Larry Ward	X
Abbott	Lisa	Sat	31-Jul	AM	3 Holding Area and Plant Valet Service - Curt Cavanaugh	
Cavanaugh	Curt	Sat	31-Jul	AM	3 Holding Area and Plant Valet Service - Curt Cavanaugh	X
Leong	Greg	Sat	31-Jul	AM	3 Holding Area and Plant Valet Service - Curt Cavanaugh	X
Ozawa	Walter	Sat	31-Jul	AM	3 Holding Area and Plant Valet Service - Curt Cavanaugh	
Ward	Larry	Sat	31-Jul	AM	4 Entrance - Larry Ward	X
Suzuki	Michiko	Sat	31-Jul	AM	4 Host and Hostesses - Alan Mai'i	X
Ho	Alma	Sat	31-Jul	AM	4 Host and Hostesses - Alan Mai'i (Hawaii Kai Volunteers)	X
Cavanaugh	Jill	Sat	31-Jul	AM	5 Potting Workshop - Phil Sharp	X
Herring	Chris	Sat	31-Jul	AM	5 Potting Workshop - Phil Sharp	X
Nitta	Sharilyn	Sat	31-Jul	AM	5 Potting Workshop - Phil Sharp	X
Watanabe	Emiko	Sat	31-Jul	AM	6 Potting Workshop - Jill Cavanaugh	X
Watanabe	Emiko	Sat	31-Jul	AM	6 Potting Workshop - Jill Cavanaugh	X
Donnan	Muriel	Sat	31-Jul	AM	7 Silent auction and KOS shirt sales - Grace Kobayashi	X
Jay	Donald	Sat	31-Jul	AM	7 Silent auction and KOS shirt sales - Grace Kobayashi	X
Abbott	Lisa	Sat	31-Jul	AM	8 Exit - Judy Nakamura	
Kutsunai	Diana	Sat	31-Jul	AM	8 Exit - Judy Nakamura	
Lee	Winifred	Sat	31-Jul	AM	8 Exit - Judy Nakamura	X
Nakamura	Judy	Sat	31-Jul	AM	8 Exit - Judy Nakamura	
Ozawa	Gayle	Sat	31-Jul	AM	8 Exit - Judy Nakamura	X

### Kaimuki Orchid Society Saturday PM Assignments

Last	First	Day	Date	Time	Station & Chair	W
Ikawa	Elinor	Sat	31-Jul	PM	1 Check In and Information Desk - Grace Kobayashi	
Oki	Jean	Sat	31-Jul	PM	1 Check In and Information Desk - Grace Kobayashi	X
Oki	Ron	Sat	31-Jul	PM	1 Check In and Information Desk - Grace Kobayashi	X
Young	Gloria	Sat	31-Jul	PM	1 Check In and Information Desk - Grace Kobayashi	
Kim	Alice	Sat	31-Jul	PM	2 Entrance - Larry Ward	
Okino	Lois	Sat	31-Jul	PM	2 Entrance - Larry Ward	X
Pang	Letty	Sat	31-Jul	PM	2 Entrance - Larry Ward	X
Arakaki	Mary Ann	Sat	31-Jul	PM	3 Holding Area and Plant Valet Service - Curt Cavanaugh	X
Cavanaugh	Curt	Sat	31-Jul	PM	3 Holding Area and Plant Valet Service - Curt Cavanaugh	X
Tang	Rolland	Sat	31-Jul	PM	3 Holding Area and Plant Valet Service - Curt Cavanaugh	X
Tang	Shirley	Sat	31-Jul	PM	3 Holding Area and Plant Valet Service - Curt Cavanaugh	X
Suzuki	Michiko	Sat	31-Jul	PM	4 Host and Hostesses - Alan Mai'i	X
Ho	Alma	Sat	31-Jul	PM	4 Host and Hostesses - Alan Mai'i (Hawaii Kai Volunteers)	X
Ward	Larry	Sat	31-Jul	PM	5 Entrance - Larry Ward	X
Cavanaugh	Jill	Sat	31-Jul	PM	5 Potting Workshop - Phil Sharp	X
Hayashida	Deanna	Sat	31-Jul	PM	5 Potting Workshop - Phil Sharp	X
Ma	Beaudine	Sat	31-Jul	PM	5 Potting Workshop - Phil Sharp	X
Loo	Willie	Sat	31-Jul	PM	8 Exit - Judy Nakamura	X
Miwa	Steph	Sat	31-Jul	PM	8 Exit - Judy Nakamura	X
Nakamura	Judy	Sat	31-Jul	PM	8 Exit - Judy Nakamura	



### Kaimuki Orchid Society Sunday AM Assignments

Last	First	Day	Date	Time	Station & Chair	W
Mai'i	Alan	Sun	1-Aug	A/PM	9 Traffic Control - Alan Mai'i	X
Murai	Alice	Sun	1-Aug	AM	1 Check In and Information Desk - Grace Kobayashi	X
Nakamura	Sharon	Sun	1-Aug	AM	1 Check In and Information Desk - Grace Kobayashi	
Young	Gloria	Sun	1-Aug	AM	1 Check In and Information Desk - Grace Kobayashi	
Barras	Adele	Sun	1-Aug	AM	2 Entrance - Larry Ward	X
Okino	Lois	Sun	1-Aug	AM	2 Entrance - Larry Ward	X
Watanabe	Michele	Sun	1-Aug	AM	2 Entrance - Larry Ward	X
Cavanaugh	Curt	Sun	1-Aug	AM	3 Holding Area and Plant Valet Service - Curt Cavanaugh	X
Itoman	Harriet	Sun	1-Aug	AM	3 Holding Area and Plant Valet Service - Curt Cavanaugh	
Itoman	Robert	Sun	1-Aug	AM	3 Holding Area and Plant Valet Service - Curt Cavanaugh	X
Ogawa	George	Sun	1-Aug	AM	4 Host and Hostesses - Alan Mai'i	X
Ogawa	Masako	Sun	1-Aug	AM	4 Host and Hostesses - Alan Mai'i	X
Suzuki	Michiko	Sun	1-Aug	AM	4 Host and Hostesses - Alan Mai'i	X
Ho	Alma	Sun	1-Aug	AM	4 Host and Hostesses - Alan Mai'i (Hawaii Kai Volunteers)	X
Cavanaugh	Jill	Sun	1-Aug	AM	5 Potting Workshop - Phil Sharp	X
Herring	Chris	Sun	1-Aug	AM	5 Potting Workshop - Phil Sharp	X
Nitta	Sharilyn	Sun	1-Aug	AM	5 Potting Workshop - Phil Sharp	X
Sharp	Phil	Sun	1-Aug	AM	5 Potting Workshop - Phil Sharp	X
Ward	Larry	Sun	1-Aug	AM	6 Entrance - Larry Ward	X
Tobita	Grace	Sun	1-Aug	AM	6 Potting Workshop - Jill Cavanaugh	X
Donnan	Muriel	Sun	1-Aug	AM	7 Silent auction and KOS shirt sales - Grace Kobayashi	X
Jay	Donald	Sun	1-Aug	AM	7 Silent auction and KOS shirt sales - Grace Kobayashi	X
Abbott	Lisa	Sun	1-Aug	AM	8 Exit - Judy Nakamura	
Kutsunai	Diana	Sun	1-Aug	AM	8 Exit - Judy Nakamura	
Nakamura	Judy	Sun	1-Aug	AM	8 Exit - Judy Nakamura	
Wong	Dick Wah	Sun	1-Aug	AM	8 Exit - Judy Nakamura	X
Wong	Kayoko	Sun	1-Aug	AM	8 Exit - Judy Nakamura	X

### Kaimuki Orchid Society Sunday PM Assignments

Last	First	Day	Date	Time	Station & Chair	W
Oki	Jean	Sun	1-Aug	PM	1 Check In and Information Desk - Grace Kobayashi	X
Oki	Ron	Sun	1-Aug	PM	1 Check In and Information Desk - Grace Kobayashi	X
Young	Gloria	Sun	1-Aug	PM	1 Check In and Information Desk - Grace Kobayashi	
Arakaki	Mary Ann	Sun	1-Aug	PM	2 Entrance - Larry Ward	X
Okino	Lois	Sun	1-Aug	PM	2 Entrance - Larry Ward	X
Pang	Letty	Sun	1-Aug	PM	2 Entrance - Larry Ward	X
Watanabe	Michele	Sun	1-Aug	PM	2 Entrance - Larry Ward	X
Cavanaugh	Curt	Sun	1-Aug	PM	3 Holding Area and Plant Valet Service - Curt Cavanaugh	X
Itoman	Harriet	Sun	1-Aug	PM	3 Holding Area and Plant Valet Service - Curt Cavanaugh	
Itoman	Robert	Sun	1-Aug	PM	3 Holding Area and Plant Valet Service - Curt Cavanaugh	X
Ogawa	George	Sun	1-Aug	PM	3 Holding Area and Plant Valet Service - Curt Cavanaugh	X
Ogawa	Masako	Sun	1-Aug	PM	3 Holding Area and Plant Valet Service - Curt Cavanaugh	X
Tang	Rolland	Sun	1-Aug	PM	3 Holding Area and Plant Valet Service - Curt Cavanaugh	X
Tang	Shirley	Sun	1-Aug	PM	3 Holding Area and Plant Valet Service - Curt Cavanaugh	X
Ho	Alma	Sun	1-Aug	PM	4 Host and Hostesses - Alan Mai'i	X
Abbott	Lisa	Sun	1-Aug	PM	4 Host and Hostesses - Alan Mai'i (Hawaii Kai Volunteers)	
Dang	Jennie	Sun	1-Aug	PM	5 Potting Workshop - Phil Sharp	X
Ma	Beaudine	Sun	1-Aug	PM	5 Potting Workshop - Phil Sharp	X
Sharp	Phil	Sun	1-Aug	pm	5 Potting Workshop - Phil Sharp	X
Ward	Larry	Sun	1-Aug	PM	7 Entrance - Larry Ward	X
Loo	Willa	Sun	1-Aug	PM	8 Exit - Judy Nakamura	X
Miwa	Steph	Sun	1-Aug	PM	8 Exit - Judy Nakamura	X
Nakamura	Judy	Sun	1-Aug	PM	8 Exit - Judy Nakamura	
Wheeler	Barry	Sun	1-Aug	PM	8 Exit - Judy Nakamura	X
Wheeler	Paula	Sun	1-Aug	PM	8 Exit - Judy Nakamura	X
Wong	Dick Wah	Sun	1-Aug	PM	8 Exit - Judy Nakamura	X
Wong	Kayoko	Sun	1-Aug	PM	8 Exit - Judy Nakamura	X